

README

Change List

1. Add a new icon at main menu for File Copy function.
2. Add preview on/off and HD off/720p/1080i in Setup menu.
3. Support ISO file, DVD Navigation and SUB/SMI/SSA subtitle.
4. More than one shortcut can be added in My Shortcuts list.

Firmware Update procedure

1. Unzip downloaded firmware to a USB flash drive. (Make sure unzipped files are all saved at root directory)
2. Unplug power cord of ME1 and then plug in USB flash drive to ME1's USB port.
3. Plug in power cord back and press power button immediately for at least 5 seconds, LED should be in orange color.
4. System Loading screen will show up first, and then Install Begin !
will show up after 20-30 seconds(The time is depends on the USB flash drive performance).



5. Wait until Installed Completed, system will restart automatically.

Note : Firmware update is not equal to initializing HDD, all data storage in HDD remains the same after firmware update.

Basic Operation

Add new shortcut

Copying files

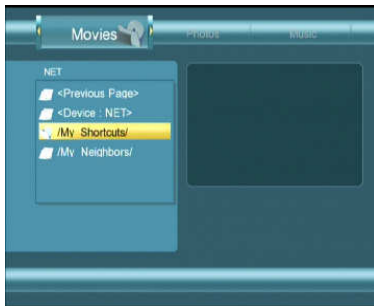
Exchange files with PC

Playing DVD files

Browser Preview On/Off

✧ **Add new shortcut**

- ✓ You have to set the connect network parameters on **Network** setup menu before you can browse from the **NET**.
- ✓ When the devices list is shown, there will be a **/My shortcuts/** item listed. **/My shortcuts/** can store IP address of the frequently used network device. Select **/My shortcuts/** and press **ENTER** key to list all the IP addresses defined in **/My shortcuts/**.



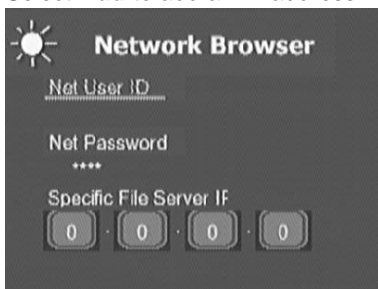
Press **REC** key, a dialog box will be shown. You can **Add**, **Rename**, and **Delete** an IP address.



Note:

- ✓ You need to check the IP address of the networked device, which you would like to browse.

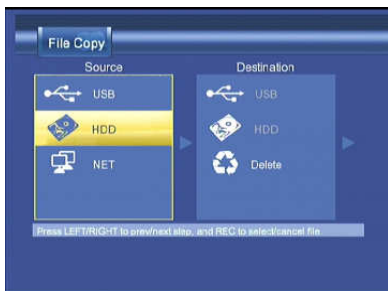
Select **Add** to add an IP address. A dialog box will be shown as follow.



After input all the data, press **ENTER** key to confirm and save the shortcut.

✧ **Copying files**

You can copy files from an **USB** storage device or a networked device to HDD of **ME1** or copy files in HDD to an USB device. You can also delete folders and files in HDD or USB device.



Please follow the steps described.

1. Select a source device, either **USB** device, **HDD**, or **NET** device.
Press **▶** key to move to destination device selection box.
2. Select a destination device.
The device can be **USB**, **HDD**, or **Delete**. If you select **[Delete]**, you will delete the selected file and folder.
3. Press **▲**, **▼** keys to choose a folder or file in the source device. Use **ENTER** key to open a folder. Use **REC** key to select all the files and folders to be copied. Press **REC** key again to cancel the selection. If there is a file or folder with same name in the destination device, an "**Overwrite ?**" dialog box will be popped up. Select **[Confirm]** to overwrite. Up to 8 items can be selected at a time. Press **▶** to move to destination device box. If you select **[Delete]** in step2, then a "Confirm to delete ?" dialog will be popped up.
4. Select the folder to be copied to. Use **ENTER** key to open a folder. Select **<Create New Folder>**, you can create a sub folder in the folder.
Press **▶** to move to confirmation dialog box.
5. Select **[Confirm]** to proceed, or select **[Cancel]** to abort. When copy is started, a "**Proceeding**" indication is shown on the top of the screen.

Note:

- ✓ **ME1** can only write to a USB storage device with **FAT32** format.
- ✓ The limit of the file size for **FAT32** is 4G.
- ✓ To backup important files in another storage device is suggested.

✧ **HD video output**

ME1 supports HD video output, 720p or 1080i, when playing Photo, and Video. From **Setup/Video** menu, you can change the **HD output**. If you select 720p or 1080i, **ME1** will play Photo and Video file with the selected video resolution.

Note:

- ✓ Only component (**YPbPr**) video output can support 720p, and 1080i

resolutions.

- ✓ Composite (**AV OUT**) video output can only support NTSC, and PAL resolution. If you select **HD output**, using Composite (**AV OUT**) video connection, there will be no display on TV or monitor when playing photo and video files. You can turn off **HD Output** from **SETUP/Video** setup menu.
- ✓ The selected resolution needs to be supported by your TV or Monitor, otherwise there will be no display.

✧ **Exchange files with PC**

ME1 can serve as an external HDD of PC. When **ME1** is powered on, use supplied

USB cable to connect USB Host port of PC and **USB Device** port of **ME1**. Windows of PC will detect HDD of **ME1** automatically. You can use file explorer to manipulate the files in HDD of **ME1**.

Note:

- ✓ The OS of PC needs to be compatible with Windows XP and above.
- ✓ Use safely removal function in Windows to stop the HDD before removing the USB connection.
- ✓ DO NOT break the USB connection when HDD is writing or reading.

✧ **Playing DVD files**

Back up a DVD video Disc into a folder in HDD, USB or NET storage device.

Note:

- ✓ Some DVD Discs can not be copied because of copy protection. The backup operation must obey your local law of copyright. Please do not copy or distribute media with copyright.

Browse the folder and Open the **video_ts** subfolder. Play the **video_ts.ifo** file. Usually, the **video_ts.ifo** is the first file in the subfolder. The menu of the DVD video will be shown, you can use the remote control to navigate the DVD video.

Navigation functions

- A. **AUDIO** selection by press the number key **4**
Select different audio or language setting.
- B. **SUBTITLE** selection by press the number key **5**
Select a subtitle.
- C. **ANGLE** selection by press the number key **7**
Select a viewing angle
- D. **BOOKMARK SET** by press the number key **3**
Set a bookmark.
- E. **BOOKMARK GOTO** by press the number key **6**
Go to the bookmark.
- F. **TITLE** by press the number key **1**
Go to Menu of the DVD video
- G. **GOTO** by press number key **2**
Press the number key 2, a **Playback Search** dialog box will be popped up. Use **▲**, **▼** arrow key to select **Title, Chapter, or Time** setting. Press **ENTER** to start **Title/Chapter/Time** input. You can use **▲**, **▼** arrow key or digits key to change the value. Press **ENTER** again, the display will jump to the specified **Title/Chapter/Time**. Press **RETURN** key, the dialog box will be closed.

✧ **Browser Preview On/Off**

You can turn the preview function on or off when browsing multimedia files from SETUP/System menu.